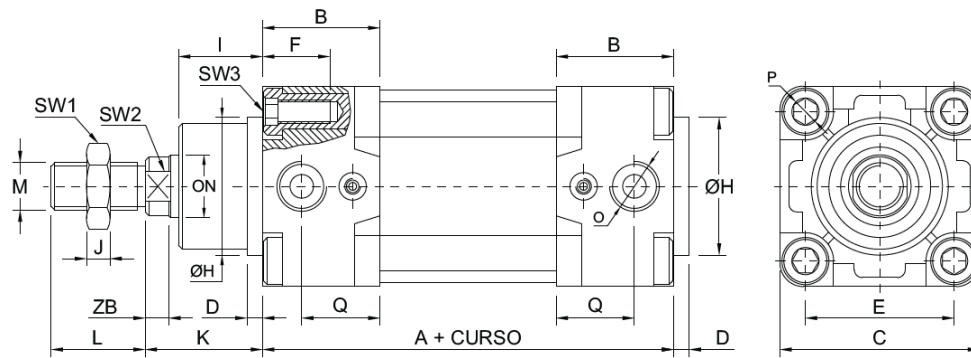


[CATÁLOGO]

CILINDRO ISO 15552

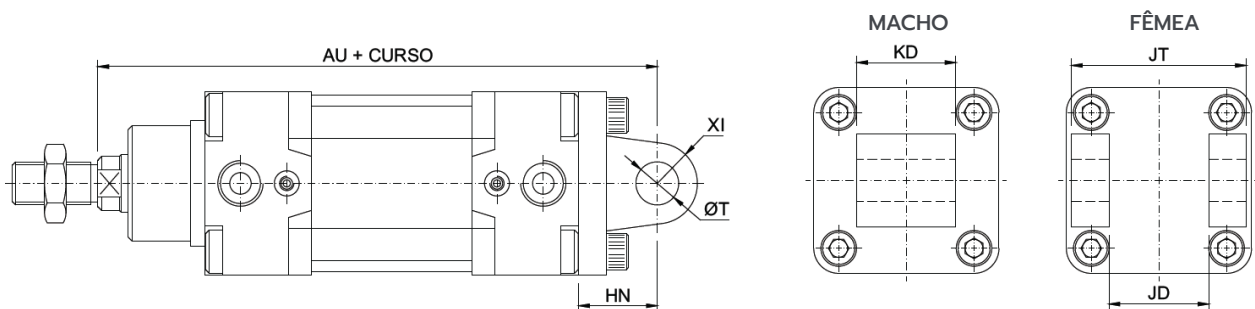


CILINDRO BÁSICO



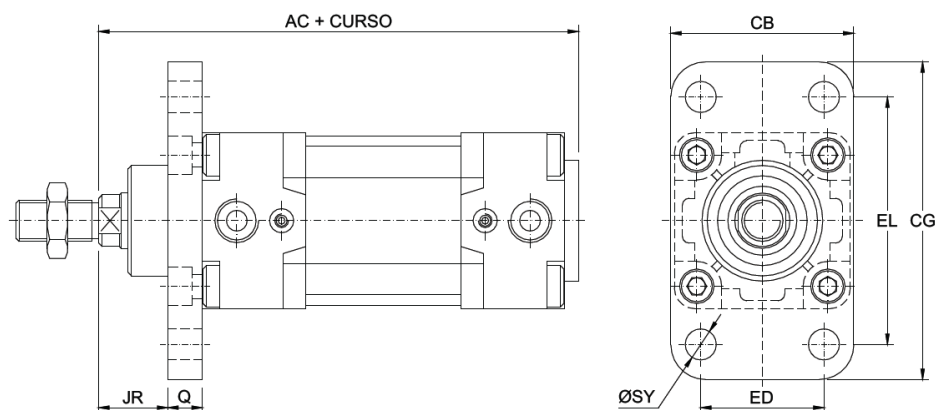
Ø Cil	32	40	50	63	80	100	125	160	200	250
A	95	105	104	121	128	140	160	180	180	200
B	29	30	34	39	43	46	55	57,5	57,5	52
C	46	54	65	75	95	115	140	177	214	270
D	4	4	4	4	4	5	7	7	7	25
E	32,5	38	46,5	56,5	72	89	110	140	175	220
F	17	17	22	22	28	28	20	24	24	25,5
ØH	30	35	40	45	45	55	60	65	75	90
I	20	21,5	29	29	35	35	41	52	60	67
J	5	6	8	8	9	9	12	14	14	21
K	26	31	38	37	46	50	65	80	95	105
L	22	24	32	32	40	40	54	72	72	84
M	M10x1,25	M12x1,25	M16x1,5	M16x1,5	M20x1,5	M20x1,5	M27x2	M36x2	M36x2	M42x2
ØN	12	16	20	20	25	25	32	40	40	50
O	1/8" BSP	1/4" BSP	1/4" BSP	3/8" BSP	3/8" BSP	1/2" BSP	1/2" BSP	1/2" BSP	1/2" BSP	1" BSP
P	M6x1	M6x1	M8x1,25	M8x1,25	M10x1,5	M10x1,5	M12x1,75	M16x2	M16x2	M20x2,5
Q	20	20	24	25	28	16	20	20	25	26,5
ZB	4,5	6,5	5	5	9	9	13	16	16	24
SW1	17	19	24	24	30	30	41	55	55	63,5
SW2	10	13	17	17	22	22	27	36	36	46
SW3	6	6	8	8	10	10	14	17	17	24

CILINDRO COM ARTICULAÇÃO TRASEIRA MACHO/FÊMEA (MP2/MP4)



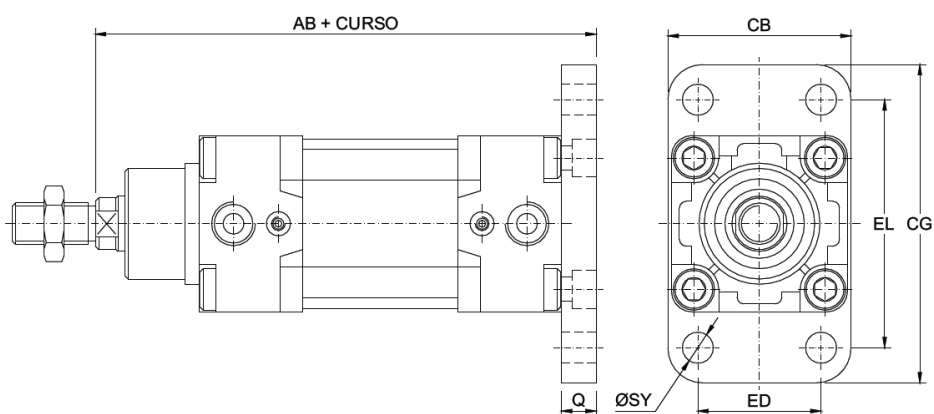
Ø CIL	032	040	050	063	080	100	125	160	200	250
AU	143	164	169	190	210	231	275	315	337	375
HN	22	25	27	32	36	41	50	55	62	70
KD	25,8	27,8	31,8	39,8	49,8	59,8	69,5	89,5	89,5	109,5
JD	26	28	32	40	50	60	70	90	90	110
JT	45	50	60	70	90	110	130	170	170	200
ØT	10	12	12	16	16	20	25	30	30	40
XI	10	12	13	16	15	20	25	30	30	40

CILINDRO COM FLANGE DIANTEIRO (MF1)



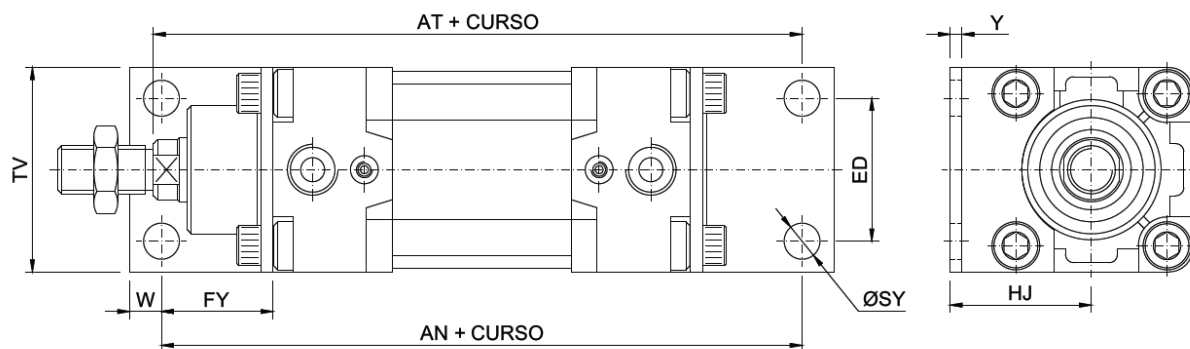
Ø Cil	32	40	50	63	80	100	125	160	200	250
AC	125	143	146	162	178	195	232	267	282	315
CB	47	53	65	74	96	114	142	190	225	270
CG	80	92	113	129	153	186	220	275	318	390
ED	32	36	45	50	63	75	90	115	135	165
EL	63,7	71,7	89,6	99,6	126	149,5	180	230	270	330
JR	16	24	26	25	30	34	45	60	70	80
Q	10	10	12	12	16	16	20	20	25	25
ØSY	7	9	9	9	12	14	16	18	22	26

CILINDRO COM FLANGE TRASEIRO (MF2)



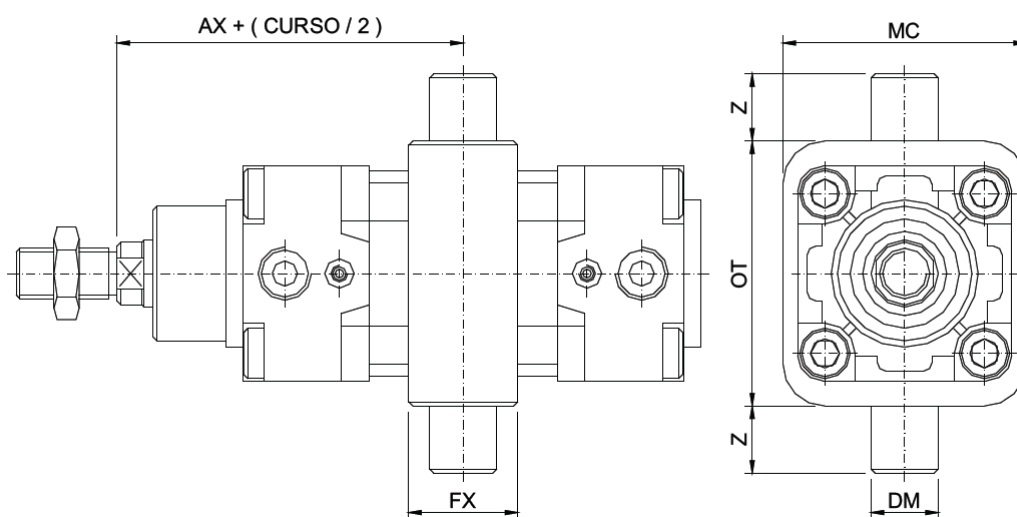
Ø Cil	32	40	50	63	80	100	125	160	200	250
AB	131	149	154	170	190	206	245	280	300	330
CB	47	53	65	74	96	111	142	190	225	270
CG	80	92	113	129	153	186	220	275	318	390
ED	32	36	45	50	63	75	90	115	135	165
EL	63,7	71,7	89,6	99,6	126	149,5	180	230	270	330
Q	10	10	12	12	16	16	20	20	25	25
ØSY	7	9	9	9	12	14	16	18	22	26

CILINDRO COM CANTONEIRAS



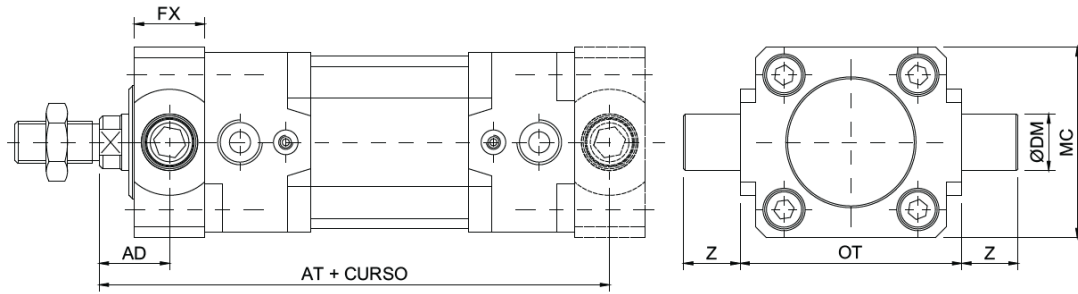
Ø Cil	32	40	50	63	80	100	125	160	200	250
AN	143	161	168	185	210	222	250	300	320	350
AT	145	167	174	190	215	231	270	320	345	380
ED	32	36	45	50	63	75	90	115	135	165
FY	24	28	32	32	41	41	45	60	70	75
HJ	32	36	45	50	63	71	90	115	135	165
TV	46,5	52	64	74	96	113	140	177	214	270
ØSY	7	9	9	9	12	14	16	18	22	28
W	7,2	8	9,5	12	16,5	19	25	25	30	35
Y	4	43	5	5	6	6	8	8	8	20

CILINDRO COM MUNHÃO DESLOCÁVEL (MT4)



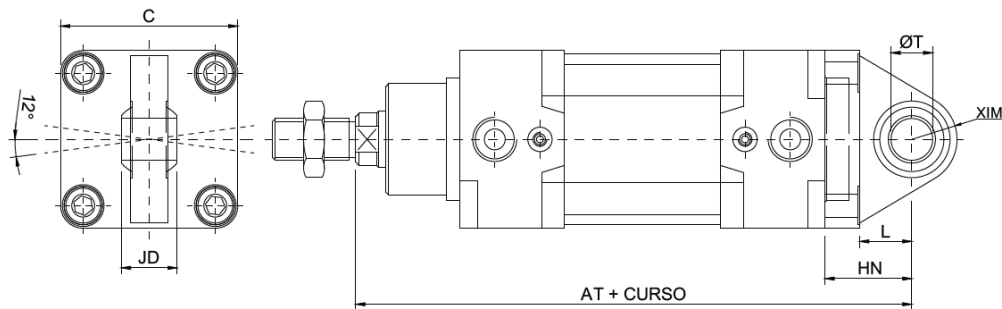
Ø Cil	32	40	50	63	80	100	125	160	200	250
AX	73	82,5	90	97,5	110	120	145	170	185	205
DM	12	16	16	20	20	25	25	32	32	40
FX	20	21	21	30	35	40	48	70	70	60
MC	65	75	95	105	130	145	150	190	242	310
OT	50	63	75	90	110	132	160	200	250	320
Z	12	16	16	20	20	25	25	32	32	40

CILINDRO COM MUNHÃO DIANTEIRO/TRASEIRO

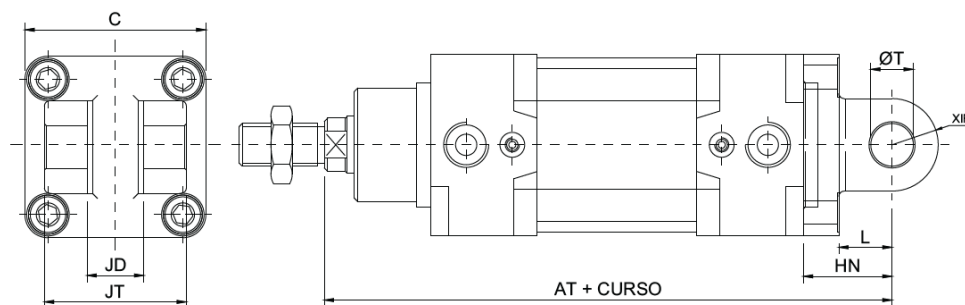


Ø Cil	32	40	50	63	80	100	125	160	200	250
AT	128	145	155	170	188	208	250	290	-	-
AD	18	20	25	25	32	32	40	50	-	-
FX	16	20	24	24	28	38	50	60	-	-
Z	12	16	16	20	20	25	25	32	-	-
OT	50	63	75	90	110	132	160	200	-	-
DM	12	16	16	20	20	25	25	32	-	-
MC	48,5	54,7	66,8	77,8	98	120	145	185	-	-

CILINDRO COM ARTICULAÇÃO TRASEIRA MACHO COM RÓTULA (MP6)

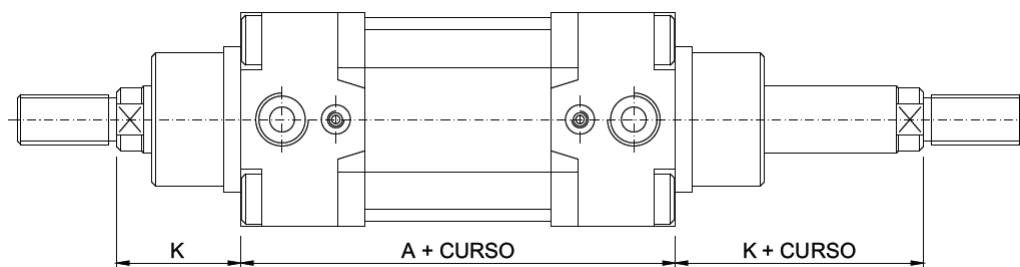


CILINDRO COM ARTICULAÇÃO TRASEIRA FÊMEA ESTREITA



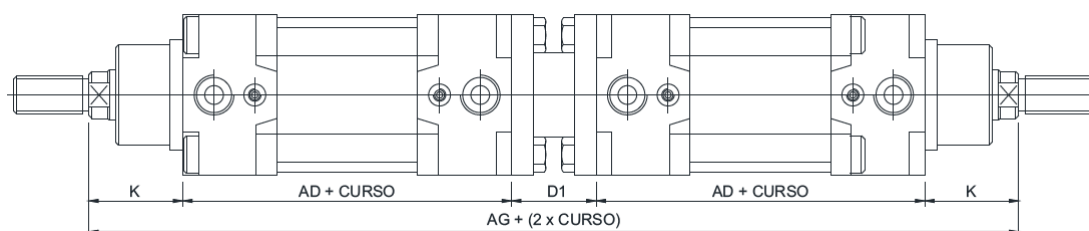
Ø Cil	32	40	50	63	80	100	125	160	200	250
AT	143	164	169	190	210	231	275	315	335	-
HN	22	25	27	32	36	41	50	55	60	-
L	12	15	17	20	20	25	30	35	35	-
XIM	15	18	20	23	27	30	40	44	-	-
XIF	11	13	13	17	17	21	26	32	25	-
ØT	10	12	16	16	20	20	30	35	35	-
JT	34	40	45	51	65	75	97	122	122	-
JD	14	16	21	21	25	25	37	43	43	-
C	46	54	65	75	95	115	140	177	230	-

CILINDRO HASTE PASSANTE



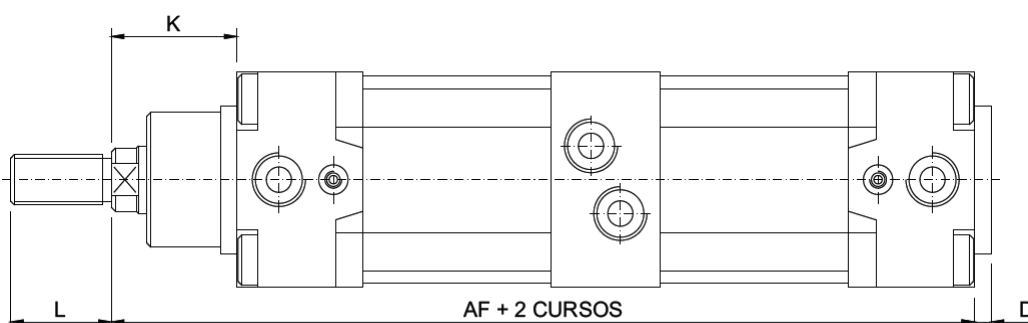
Ø Cil	32	40	50	63	80	100	125	160	200	250
A	94	105	106	121	128	138	160	180	180	200
K	26	34	38	37	46	50	65	80	95	105

CILINDRO DUPLEX GEMINADO (COM FLANGE DE UNIÃO)



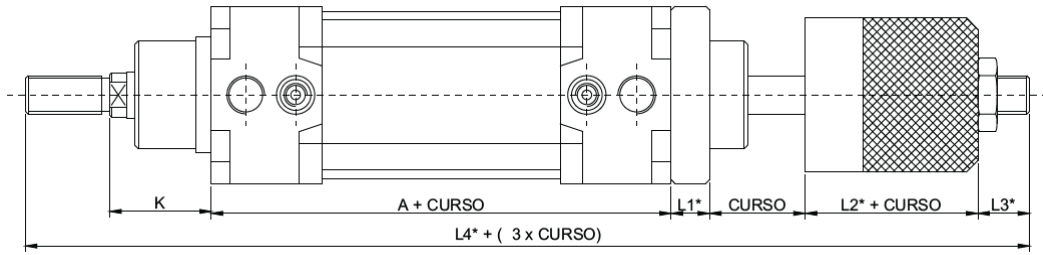
Ø Cil	32	40	50	63	80	100	125	160	200	250
AD	94	105	106	121	128	138	160	180	180	-
K	26	34	38	37	46	50	65	80	95	-
D1	27	27	32	32	38	38	50	60	60	-
AG	267	305	320	348	386	418	500	580	610	-

CILINDRO DUPLEX CONTÍNUO



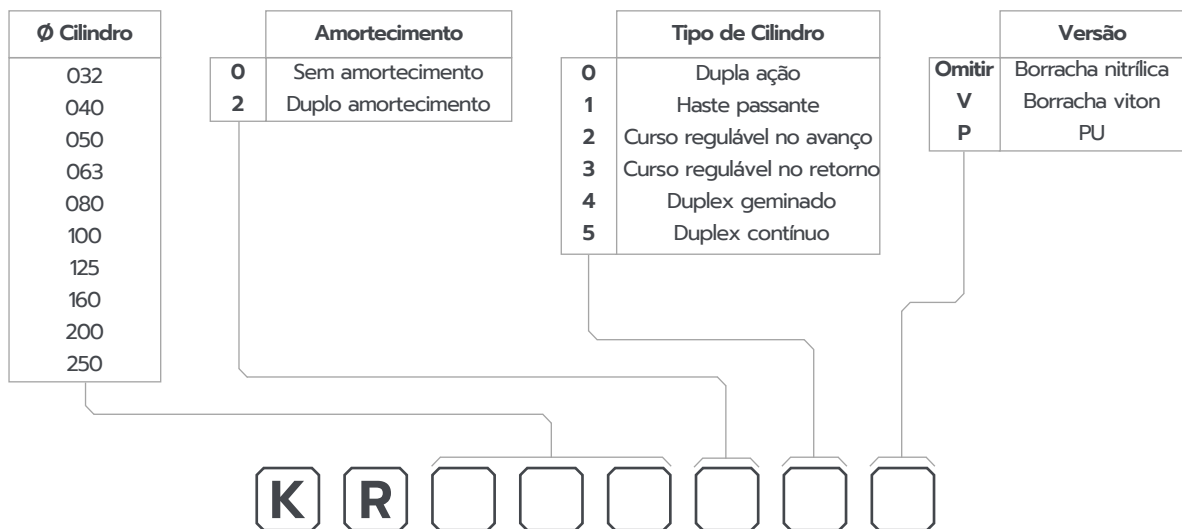
Ø Cil	32	40	50	63	80	100	125	160	200	250
AF	178	210	203	225	204	272	313	360	375	-
D	4	4	4	4	4	4	7	7	7	-
K	26	34	38	37	46	50	65	80	95	-
L	22	24	32	32	40	40	54	72	72	-

CILINDRO COM CURSO REGULÁVEL NO AVANÇO

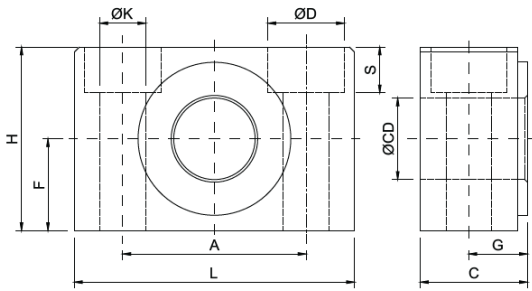


Ø Cil	32	40	50	63	80	100	125	160	200	250
L1*	10	10	12	12	16	16	20	-	-	-
L2*	20	24	30	32	37	42	70	82	90	-
L3*	13,5	14	19,2	13,2	14	14,1	15	20	20	-
L4*	187	206,2	235,8	247,4	286	302,6	384	434	457	-

KIT DE REPARO



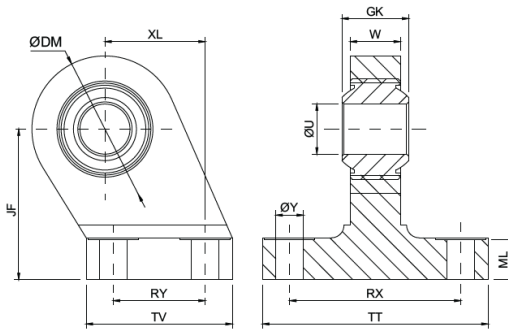
SUPORE PARA MUNHÃO



Obs.: Fornecido em pares.

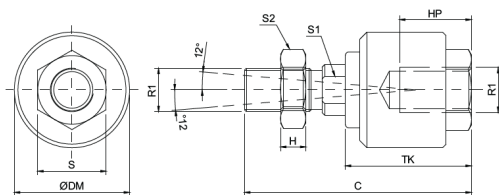
Ø Cil	32	40	50	63	80	100	125	160	200	250
Ref.	032SM	040SM	050SM	063SM	080SM	100SM	125SM	160SM	200SM	-
H	30	36	36	40	40	50	50	60	60	-
F	15	18	18	20	20	25	25	30	30	-
L	46	55	55	65	65	75	75	92	92	-
A	32	36	36	42	42	50	50	60	60	-
ØK	6,5	9	9	11	11	14	14	18	18	-
ØD	11	15	15	18	18	20	20	26	26	-
S	7	9	9	11	11	13	13	17	17	-
ØCD	12	16	16	20	20	25	25	32	32	-
C	18	21	21	23	23	28,5	28,5	40	40	-
G	10,5	12	12	13	13	16	16	22,5	22,5	-

SUPORE PARA ARTICULAÇÃO TRASEIRA FÊMEA ESTREITA



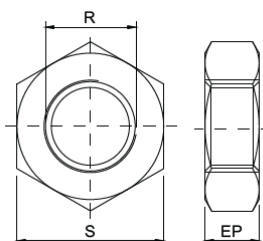
Ø Cil	32	40	50	63	80	100	125	160	200	250
Ref.	032SAR	040SAR	050SAR	063SAR	080SAR	100SAR	125SAR	160SAR	200SAR	-
XL	21	24	33	37	47	55	70	97	97	-
ØDM	30	34	40	44	54	58	78	84	84	-
JF	32	36	45	50	63	71	90	115	135	-
RY	18	22	30	35	40	50	60	88	88	-
TV	31	35	45	50	60	70	90	126	130	-
GK	14	16	21	21	25	25	37	43	43	-
W	10,5	12	15	15	18	18	25	28	28	-
ØY	6,6	6,6	9	9	11	11	14	14	18	-
ØU	10	12	16	16	20	20	30	35	35	-
ML	10	10	12	12	14	15	20	28	35	-
RX	38	41	50	52	66	76	94	118	122	-
TT	51	54	65	67	86	96	124	156	162	-

PONTEIRA ANGULAR PARA HASTE



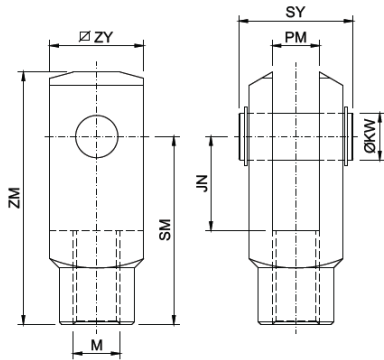
Ø Cil	32	40	50	63	80	100	125	160	200	250
Ref.	032PA	040PA	050PA	063PA	080PA	100PA	-	-	-	-
ØDM	26	32	45	45	53	53	-	-	-	-
S	17	19	27	27	32	32	-	-	-	-
R1	M10x1,25	M12x1,25	M16x1,5	M16x1,5	M20x1,5	M20x1,5	-	-	-	-
S1	10	12	17	17	22	22	-	-	-	-
S2	17	19	24	24	30	30	-	-	-	-
H	6	7	8	8	9	9	-	-	-	-
HP	12	12	20	20	24	24	-	-	-	-
TK	34	35	55	55	65	65	-	-	-	-
C	60	64	90	90	102	102	-	-	-	-

PORCA PARA HASTE



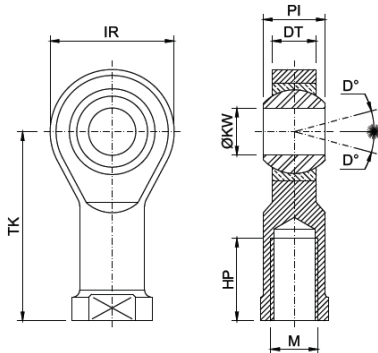
Ø Cil	32	40	50	63	80	100	125	160	200	250
Ref.	70055	70057	70059	70059	70061	70061	70544	70550	70550	77938
EP	6	6	8	8	9	9	12	14	14	21
S	17	19	25	25	32	32	41	51	51	63,5
R	M10x1,25	M12x1,25	M16x1,5	M16x1,5	M20x1,5	M20x1,5	M27x2	M36x2	M36x2	M42x2

GARFO PARA HASTE



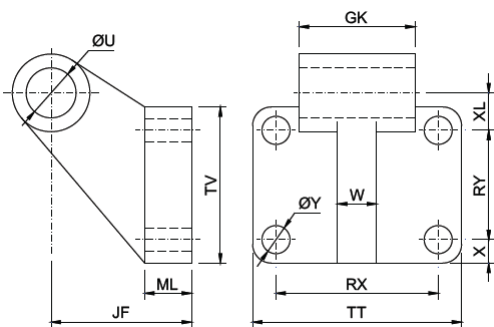
Ø Cil	32	40	50	63	80	100	125	160	200	250
Ref.	032GF	040GF	050GF	063GF	080GF	100GF	125GF	160GF	200GF	250GF
JN	20	24	32	32	40	40	54	72	72	84
M	M10x1,25	M12x1,25	M16x1,5	M16x1,5	M20x1,5	M20x1,5	M27x2	M36x2	M36x2	M42x2
PM	10,15	12,15	16,15	16,15	20,15	20,15	30,15	35,15	35,15	40,15
SM	40	48	64	64	80	80	110	144	144	168
SY	26	31	39	39	52,5	52,5	74	90	90	110
ZM	52	64	86	86	107	107	148	188	188	232
ZY	20	24	32	32	40	40	55	70	70	85
ØKW	10	12	16	16	20	20	30	35	35	40

PONTEIRA ROTULAR PARA HASTE



Ø Cil	32	40	50	63	80	100	125	160	200	250
Ref.	032RT	040RT	050RT	063RT	080RT	100RT	125RT	160RT	200RT	250RT
D	13°	13°	15°	15°	14°	14°	15°	15°	15°	15°
DT	10,5	12	15	15	18	18	25	28	28	33
IR	28	32	42	42	50	50	73	80	80	90
HP	20	22	28	28	33	33	51	56	56	65
M	M10x1,25	M12x1,25	M16x1,5	M16x1,5	M20x1,5	M20x1,5	M27x2	M36x2	M36x2	M42x2
PI	14	16	21	21	25	25	37	43	43	49
TK	43	50	64	64	77	77	110	125	125	142
ØKW	10	12	16	16	20	20	30	35	35	40

SUPORE PARA ARTICULAÇÃO TRASEIRA FÊMEA



Ø Cil	32	40	50	63	80	100	125	160	200	250
Ref.	032SA	040SA	050SA	063SA	080SA	100SA	125SA	160SA	200SA	250SA
GK	26	28	32	40	50	60	70	90	90	110
JF	32	36	45	50	63	71	90	115	135	165
ML	8	10	12	12	14	15	20	25	30	35
RX	38	41	50	52	66	76	94	118	122	150
RY	18	22	30	35	40	50	60	88	90	110
TT	51	54	65	67	86	96	124	156	162	200
TV	31	35	45	50	60	70	90	126	130	160
X	6,5	6,5	7,5	7,5	10	10	15	17,5	20	25
XL	3	2	3	2	7	5	10	9	15	18
W	8	12	12	12	14	15	18	23	23	50
ØU	10	12	12	16	16	20	25	30	30	40
ØY	6,6	6,6	9	9	11	11	11	14	16	22

ACESSÓRIOS DE MONTAGEM

Ø Cilindro	Tipo de Montagem			
	032	CT	Cantoneiras (par)	GF
040	FG	Flange	RT	Rótula
050	AF	Articulação tras. fêmea	SA	Suporte p/ artic. tras. fêmea
063	AM	Articulação tras. macho	SAR	Suporte p/ artic. tras. c/ rótula
080	MCEU	Munhão central (Europa)	PA	Ponteira angular
100	MCR	Munhão central (Redondo)	AMR	Artic. tras. macho c/ rótula
125	MDT	Minhão fixo dianteiro/traseiro	AFE	Artic. tras. fêmea estreita
160	SM	Suporte p/ munhão		

