

**Bel Air**<sup>®</sup>  
PNEUMÁTICA & HIDRÁULICA

[CATÁLOGO]

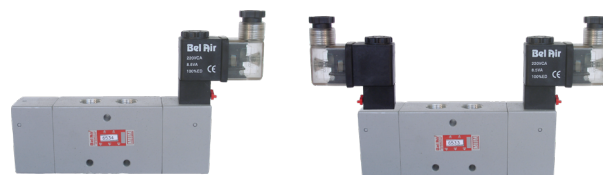
# VÁLVULAS SÉRIE 6.000



# VÁLVULAS DIRECIONAIS - SÉRIE 6000 - 3/8"

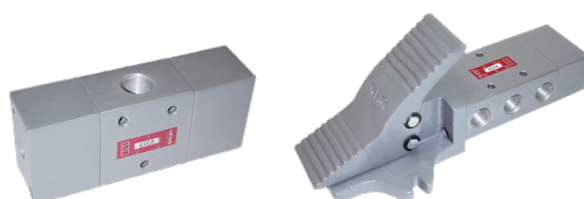
## CARACTERÍSTICAS TÉCNICAS

Pressão	Máxima de 10,5 kgf/cm <sup>2</sup> (150 psi)
Temperatura	-10°C a 80°C
Fluido	Ar comprimido filtrado e lubrificado
Vazão	1,82 m <sup>3</sup> /min (obtida a 7 kgf/cm <sup>2</sup> )
Construção	Tipo <i>Spool</i>

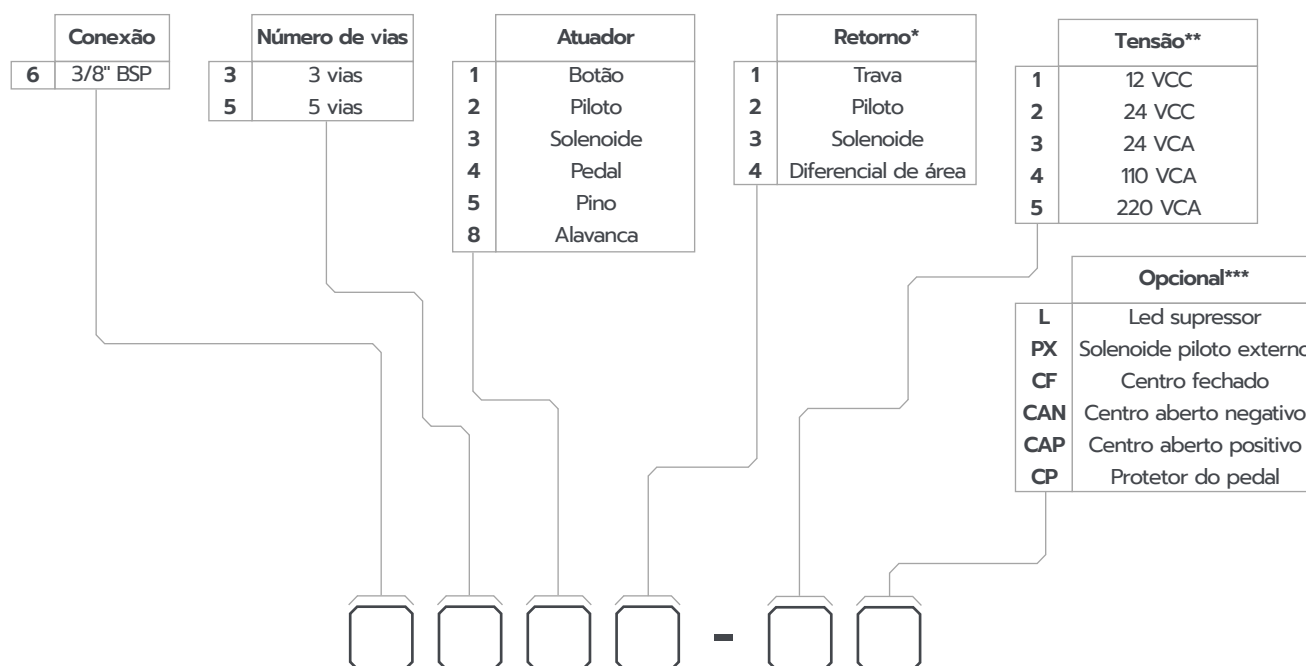


## MATERIAIS

Corpo	Alumínio
Carretel	Alumínio
Êmbolo	Alumínio com Anodização Dura
Vedações	Buna-N



## CODIFICAÇÃO

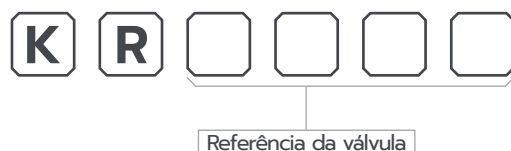


\* Para casos onde se deseja retorno por mola, devido ao tamanho da válvula, o retorno é substituído por diferencial de área.

\*\* Utilizar referência de tensão somente quando atuador for solenoide.

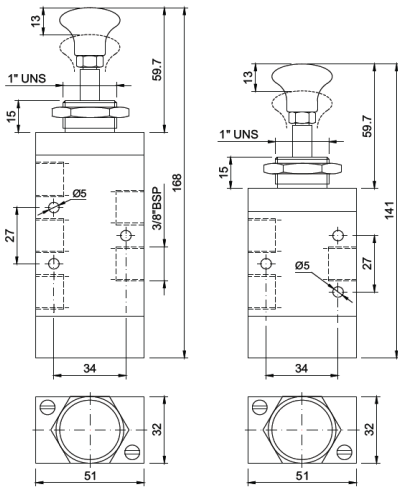
\*\*\* As válvulas centro fechado (CF), centro aberto negativo (CAN) e centro aberto positivo (CAP) são 3 posições.

## KIT DE REPARO

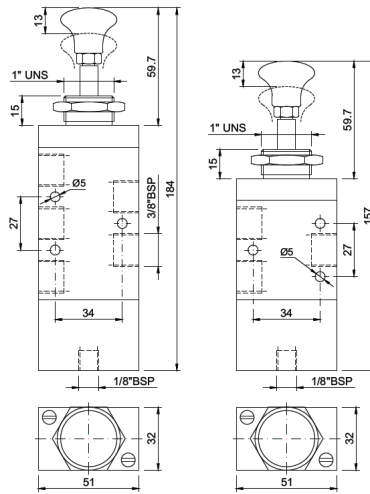


**DIMENSIONAL**

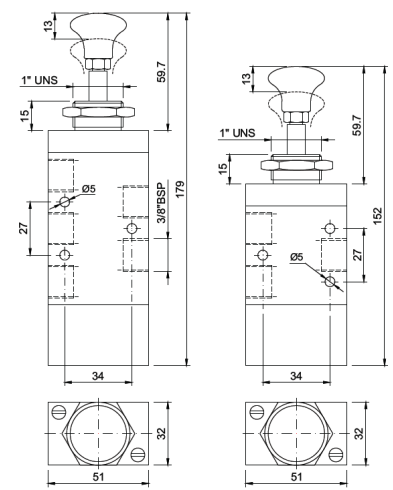
**Botão Trava 5 e 3 vias**



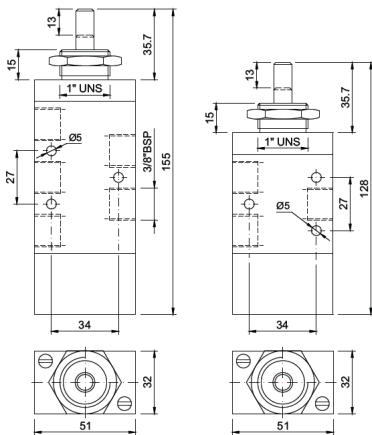
**Botão Piloto 5 e 3 vias**



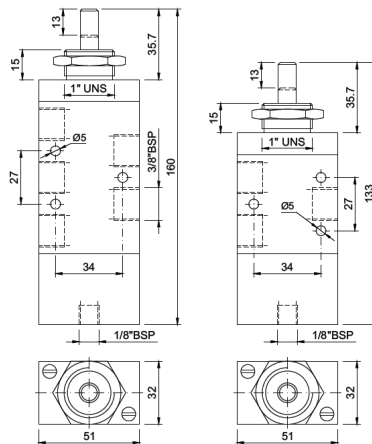
**Botão Diferencial 5 e 3 vias**



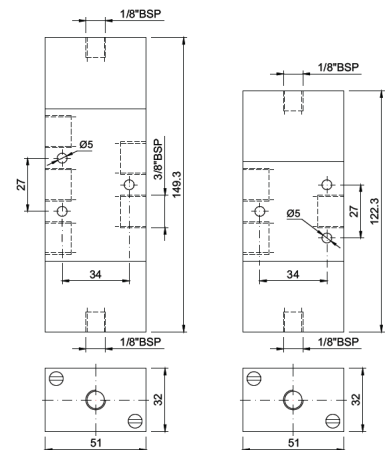
**Pino Diferencial 5 e 3 vias**



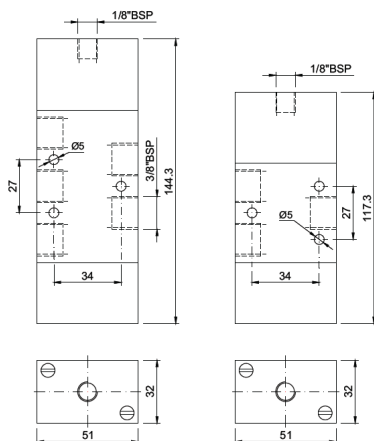
**Pino Piloto 5 e 3 vias**



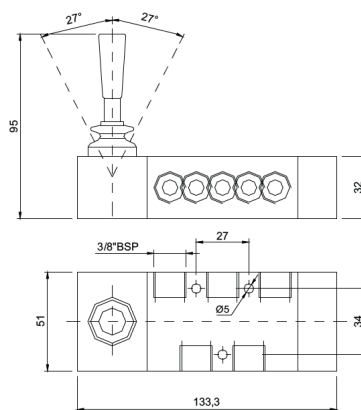
**Duplo Piloto 5 e 3 vias**



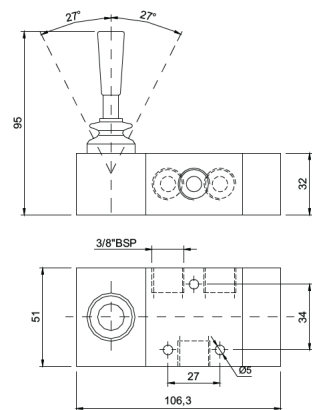
**Piloto Diferencial 5 e 3 vias**



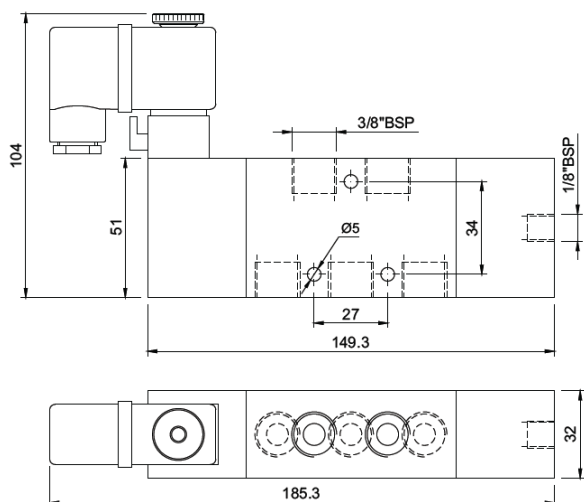
**Alavanca Trava/Diferencial 5 vias**



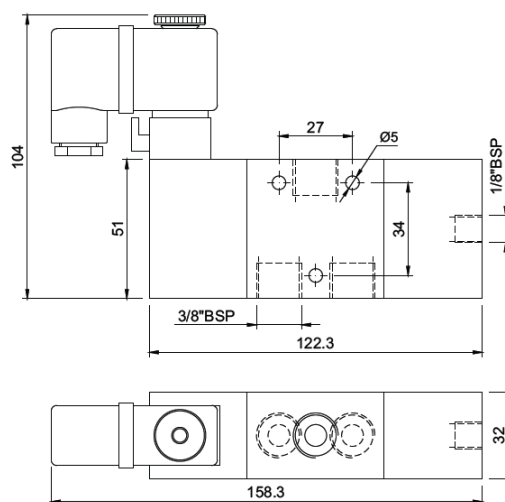
**Alavanca Trava/Diferencial 3 vias**



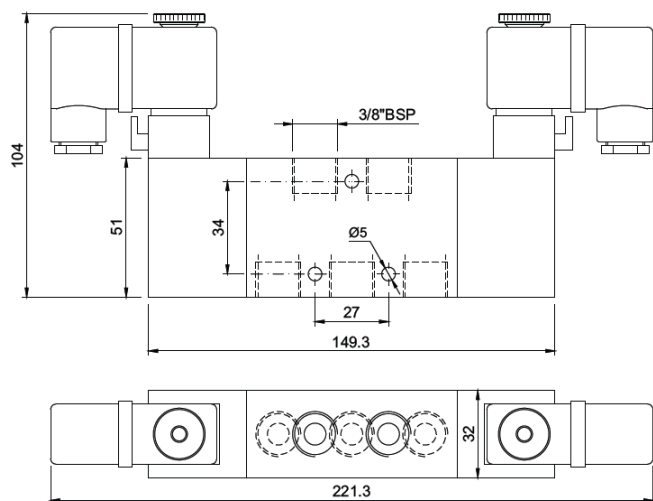
Solenoide Piloto 5 vias



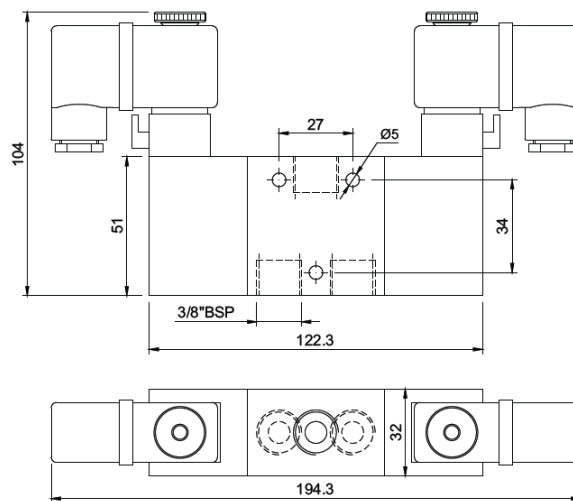
Solenoide Piloto 3 vias



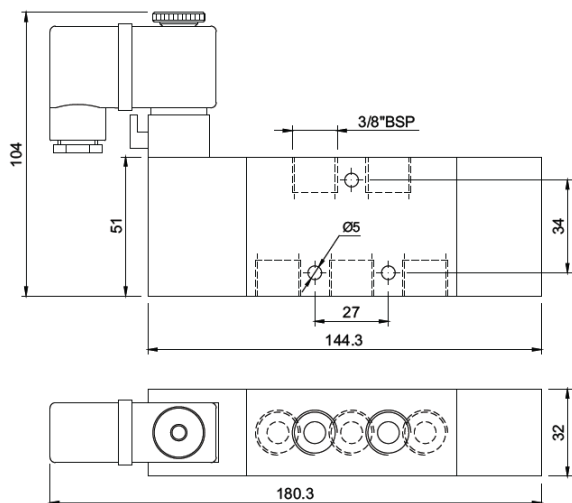
Duplo Solenoide 5 vias



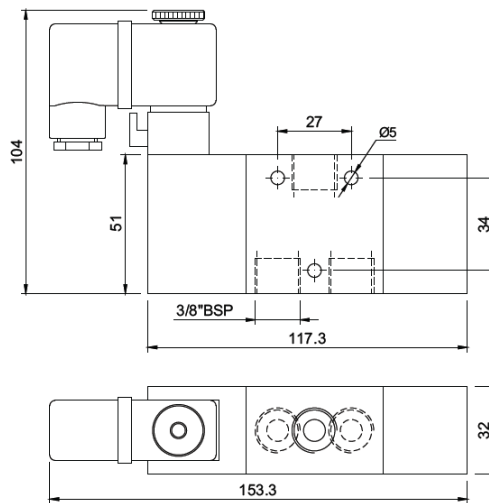
Duplo Solenoide 3 vias



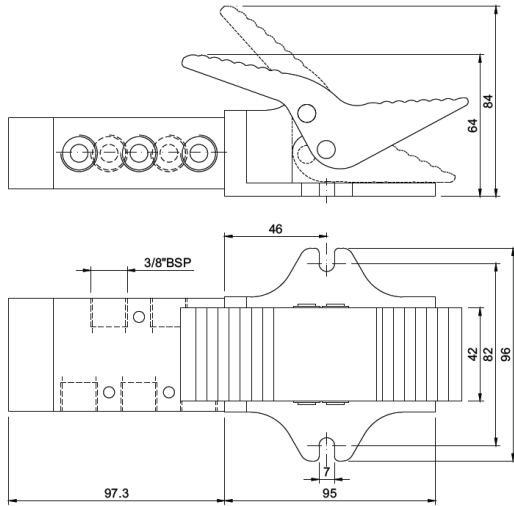
Solenoide Diferencial 5 vias



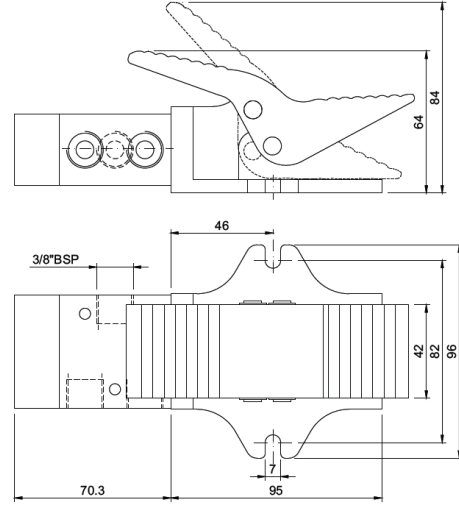
Solenoide Diferencial 3 vias



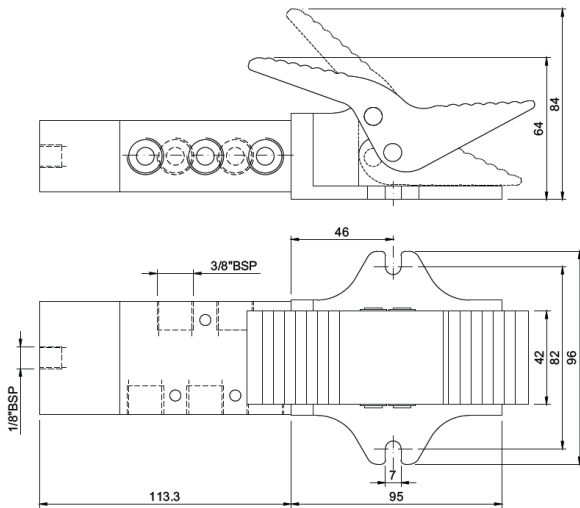
**Pedal Trava 5 vias**



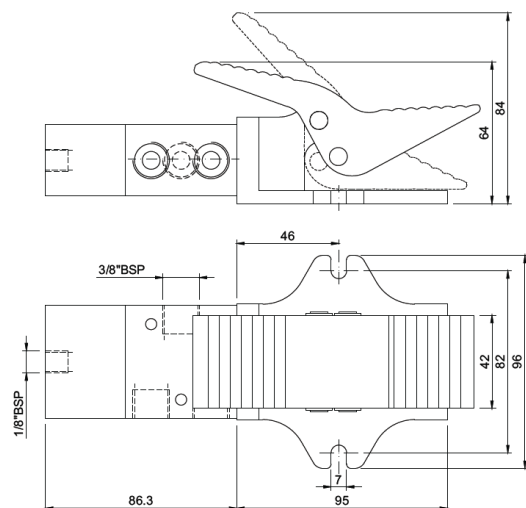
**Pedal Trava 3 vias**



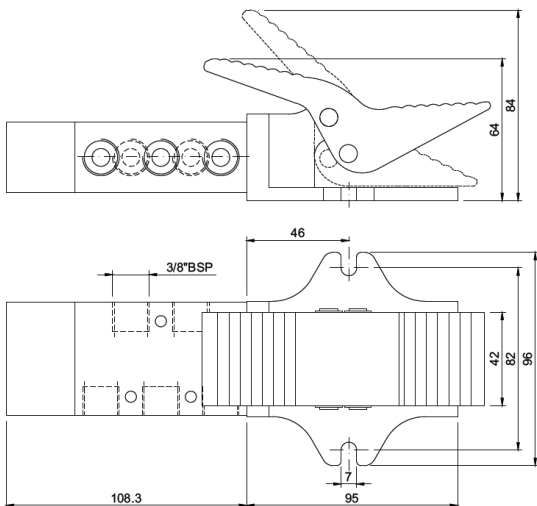
**Pedal Piloto 5 vias**



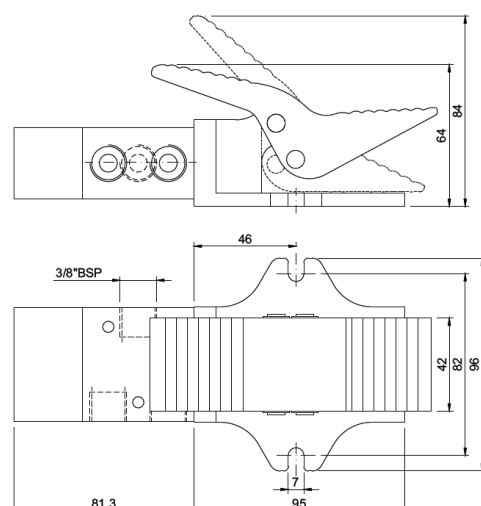
**Pedal Piloto 3 vias**



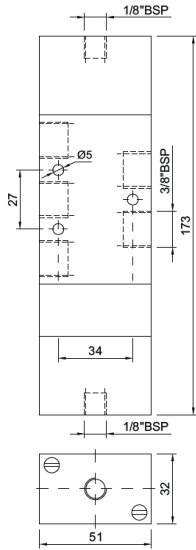
**Pedal Diferencial 5 vias**



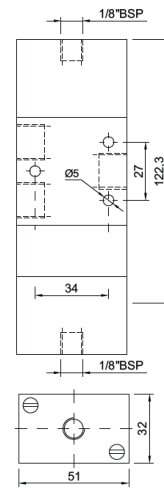
**Pedal Diferencial 3 vias**



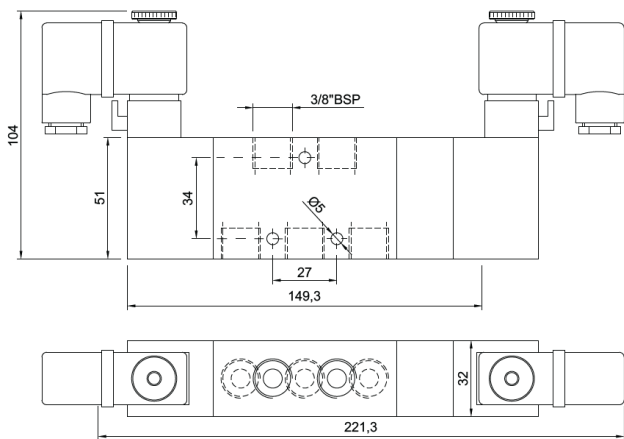
Duplo Piloto 5 Vias - 3 posições



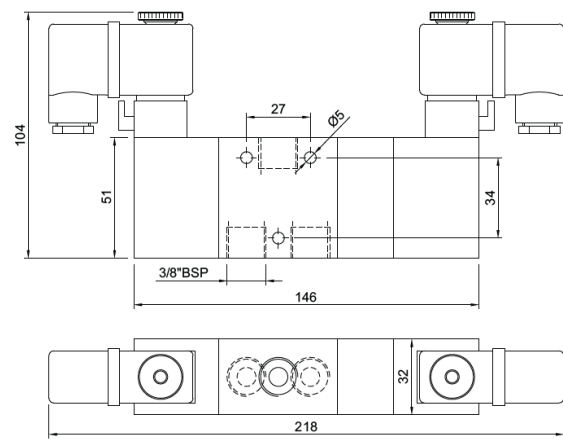
Duplo Piloto 3 Vias - 3 posições



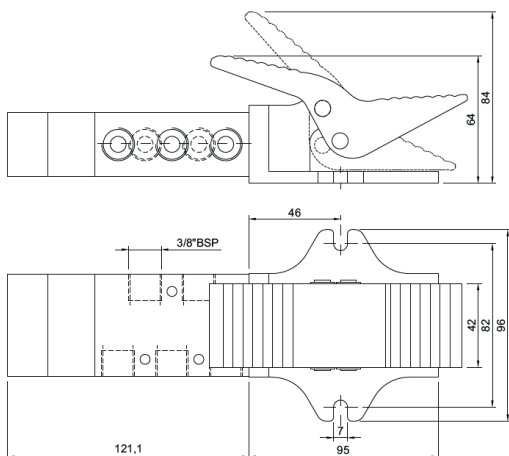
Duplo Solenoide 5 Vias - 3 posições



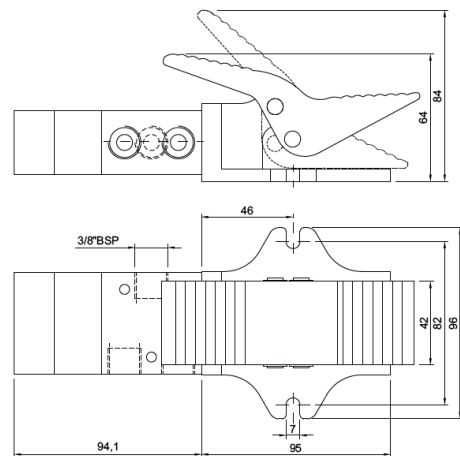
Duplo Solenoide 3 Vias - 3 posições



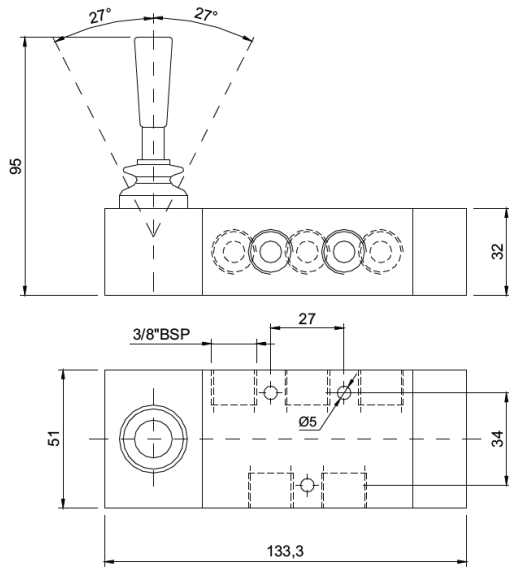
Pedal Diferencial 5 Vias - 3 posições



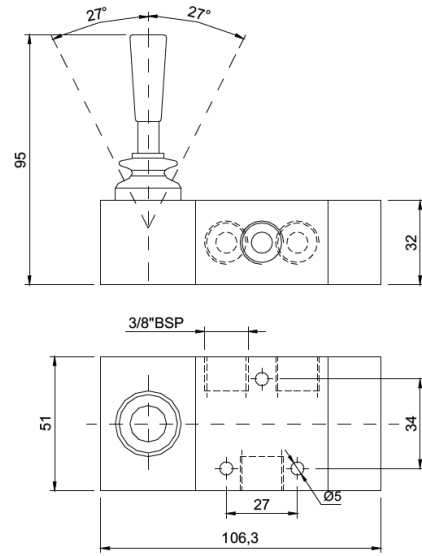
Pedal Diferencial 3 Vias - 3 posições



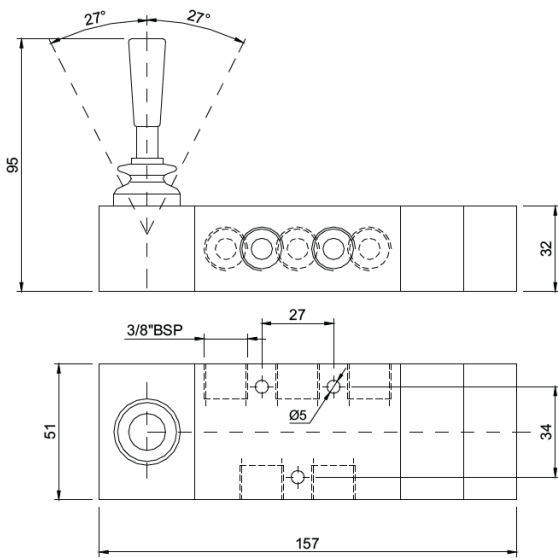
**Alavanca Trava 5 Vias - 3 posições**



**Alavanca Trava 3 Vias - 3 posições**



**Alavanca Diferencial 5 Vias - 3 posições**



**Alavanca Diferencial 3 Vias - 3 posições**

